

CERTIFICATE OF LOCATION OF GOVERNMENT CORNER

NORTHEAST Corner of Section 11, Township 107, Range 42, 5TH P.M.

STATE OF MINNESOTA, County of MURRAY

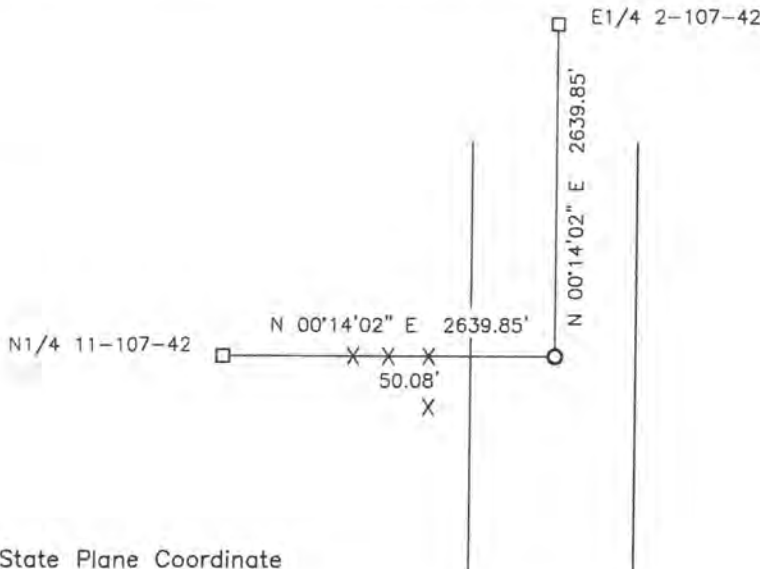
At the corner location shown on the sketch:

On 11-21-2012 found a PK NAIL

left monument as found, lowered monument, removed monument (explain)

On _____ placed a _____

SKETCH OF REFERENCE TIES



Minnesota State Plane Coordinate
System Murray County Datum
NAD83 (1996)

N: 189998.294
E: 479785.678

Nail and bottle cap in corner fence post West 50.08'

Statement of evidence relative to this corner location is on back of page.

I hereby certify that this document and the data contained herein was prepared by me or under my direct supervision.

Daniel L. Bueltel 9/25/18
DATE

Daniel L. Bueltel
License No. 43844

STATE OF MINNESOTA, }
COUNTY OF MURRAY, } ss.

I hereby certify that the within Instrument was filed in this office for record on the 5TH day of FEBRUARY A.D. 20 19 at 9:00 o'clock A. M., and was duly recorded as Document No. _____

Evelyn C. Larson
County Recorder

Statement of Evidence

NE 11-107-42

In 1861, L. G. M. Fletcher did the original subdivision of the township.

On June 6, 1901, J. W. Woolstiencraft set a stone at the corner.

In 1934, the Murray County Highway Department set a concrete monument over stone and placed an iron over the monument.

In 1979, the Murray County Highway Department found an iron over a concrete monument at the corner.

On August 19, 2013, the Murray County Highway Department set a PK nail at the road surface after overlay.

On November 21, 2012, Bueltel-Moseng Land Surveying found a PK nail at the corner.